

# Landscape Architecture: **Water Features**



ROCKPORT



Introduction	7
Parks	8
Diagonal Mar Park	10
Alexander Kiellands Plass	18
General Mills Corporation	24
Water Park	32
Noerresundby Urban Garden	42
Loučné River Dyke	48
Bridges	56
Foot Bridge	58
Hemelwater Bridge	66
Geometric Hot Springs	70
Squares	80
Pedestrian Zone of Innichen	82
Pier Square	88
Aguas Square	92
François Mitterrand Square	98
Čufarjev Square	106
Nombre d'Or Square	114
Harbour Square	120
St. Karl's Public School	124
Pausenplatz	128
Barcelona Trade Fair	132
Borders	136
Pedestrian Walkway of Deer Moat	138
Roombeek	144
Central Water Park	150
Public Space in Gaggiano	156
Oriental Bay	164
Seebad Zweiern	172
Forum 2004 Bathing Area	176
Cendon di Silea	186





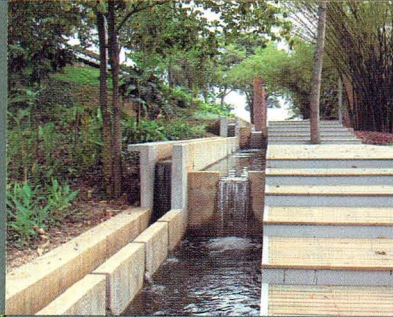




## Introduction

Over the years different methods have been used to introduce water into garden design. Water played a vital role in the Arabian garden and great subtlety was required to create sophisticated compositions due to the scarcity of this precious liquid. In the Italian Renaissance, water elements were used in abundance, where the uneven lie of the land could result in dynamic features such as waterfalls, fountains, or ponds, which facilitated the creation of focal points. During the French baroque period the same effects were created in totally flat landscapes, which called for the development of hydraulic systems and technology applicable to garden design. On the other hand, the model of the romantic English garden allowed natural forms to be incorporated in the garden design. Today the public feels the need to enhance and be a part of the landscape. The fountains, water ways, and ponds continue to have a decorative and sculptural character, but they are also for the enjoyment of everyone. Contemporary design searches for strategies which incorporate into the town's fabric natural forms of water, such as rivers, lakes, and waterfronts. The following pages present the latest contributions by landscapers from all over the world in the design of water elements in public spaces.

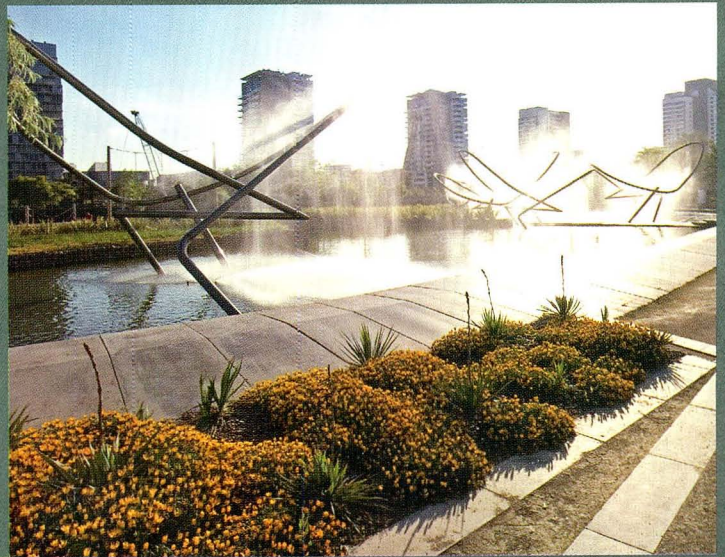




# Parks



# Parks









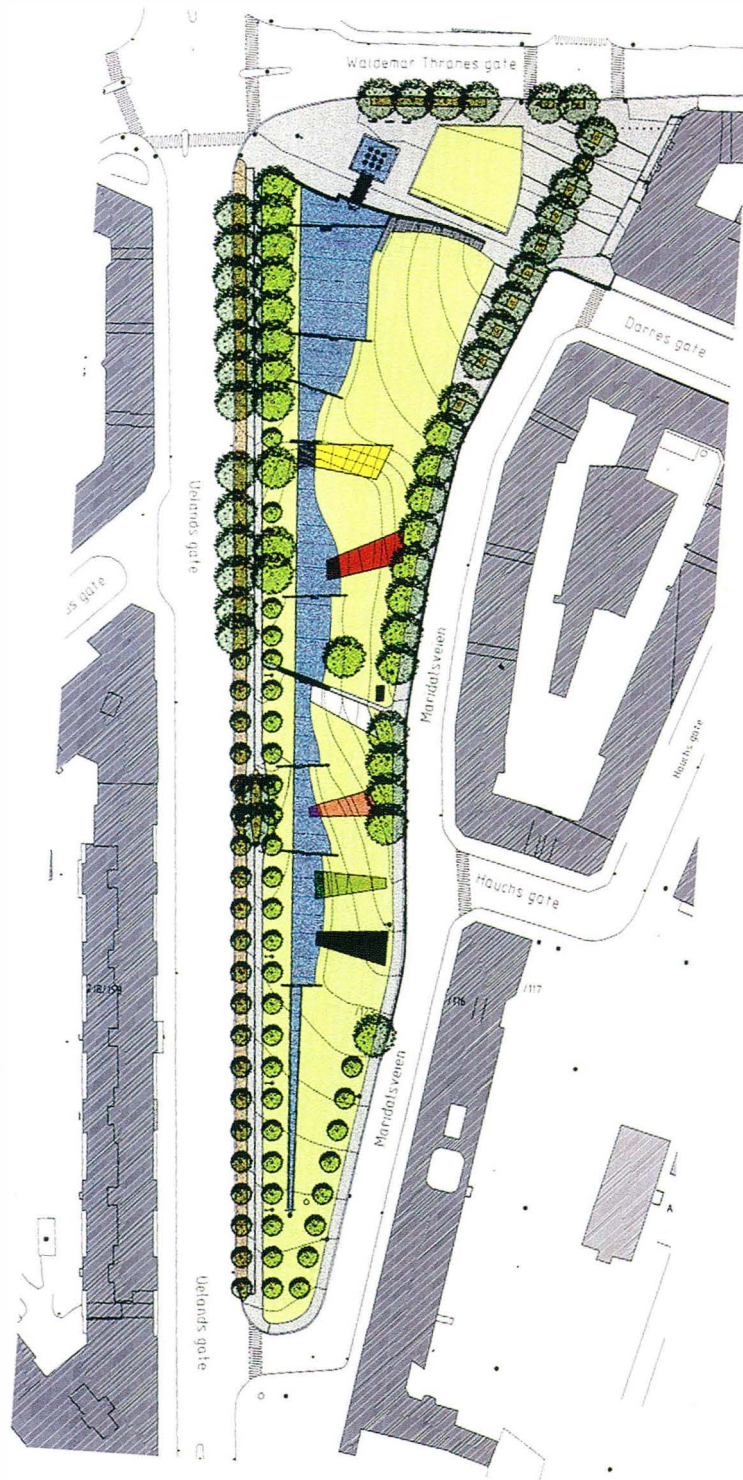


General plan









General plan





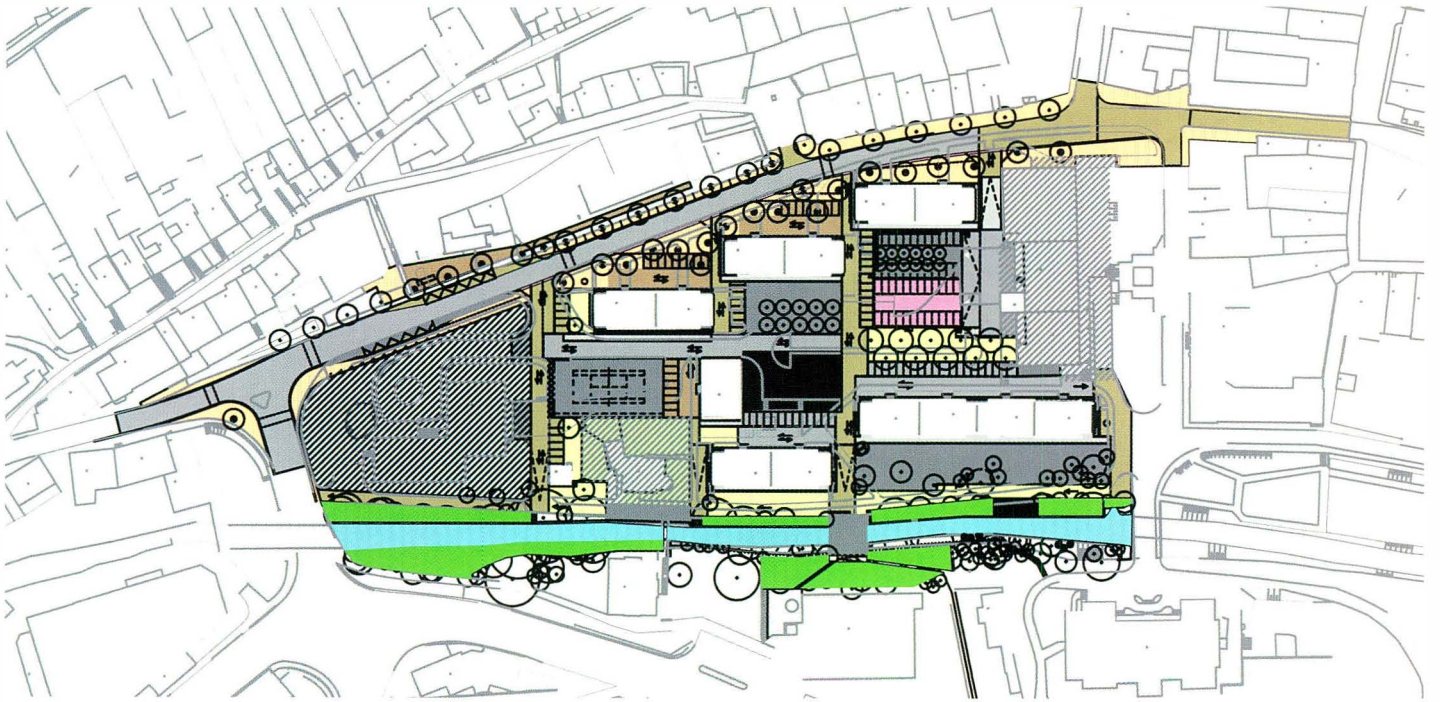




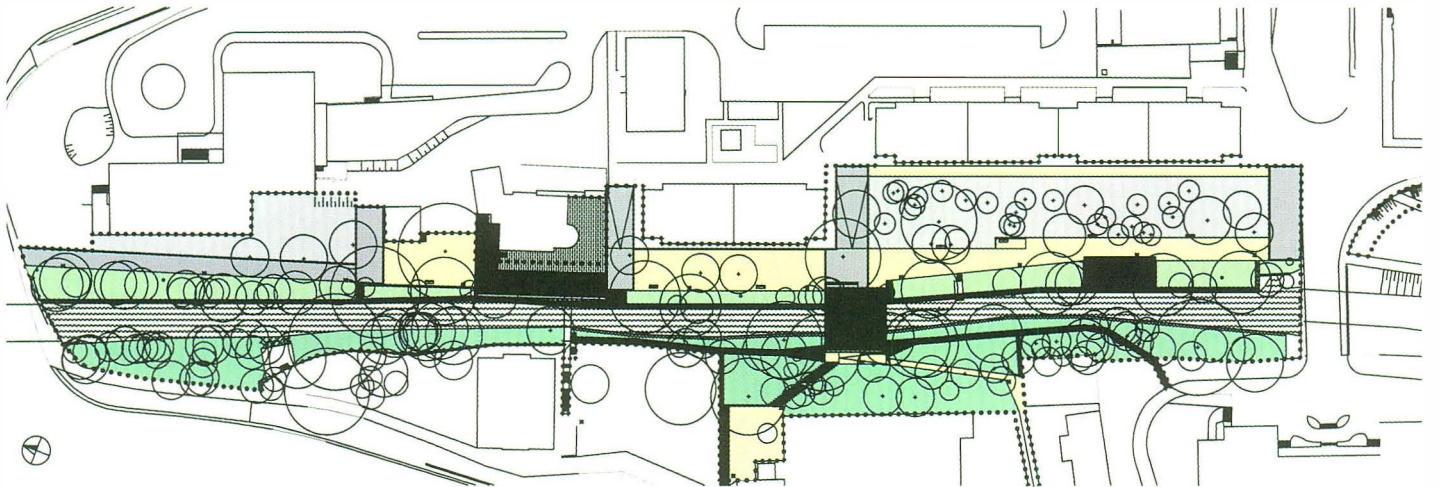








General plan



Linear park plan







Photos © Guy Wemborne



## Geometric Hot Springs | Germán del Sol

**Villarica National Park, Chile, 2003** This project involved developing the thermal hot springs which erupt naturally in a nearly inaccessible gorge, at the heart of the lush forests of the Villarica National Park in Chile. There are over sixty thermal springs which produce more than 5.3 gallons (20 l) of water per second at temperatures of around 176°F (80°C). The project uses wooden walkways which travel along the valley bottom, allowing the visitor to enjoy the bathing facilities. This was achieved by excavating twenty wells along the 1,476' (450 m) ravine in and amongst the exuberant vegetation. The walkways, which are flat surfaces without steps, allow people to explore the ravine with ease in order to find the ideal private spot for bathing, without having to worry about tripping up when it gets dark or sliding on ice in the winter. The project, as well as the walkways, also includes toilets, changing areas, and a series of terraces which provide spots to relax, and enjoy the views of the surrounding forest.

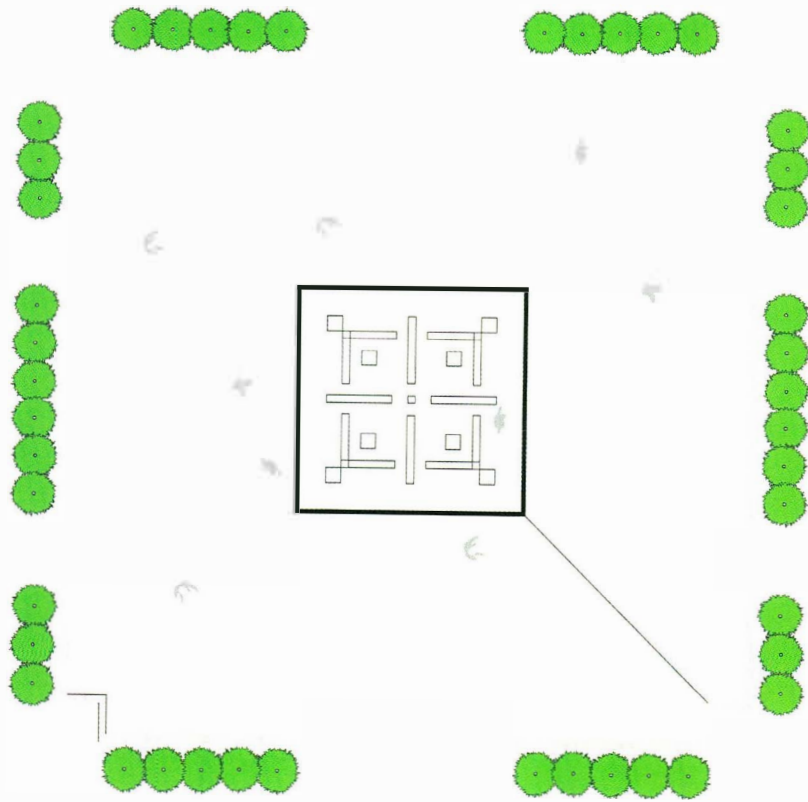




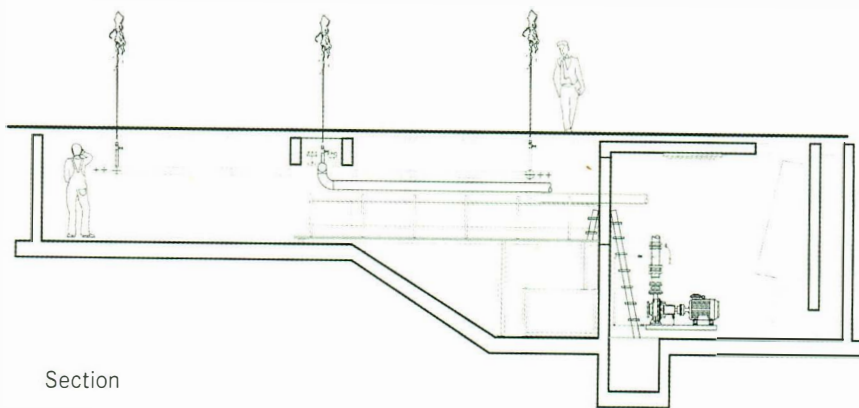








Plan

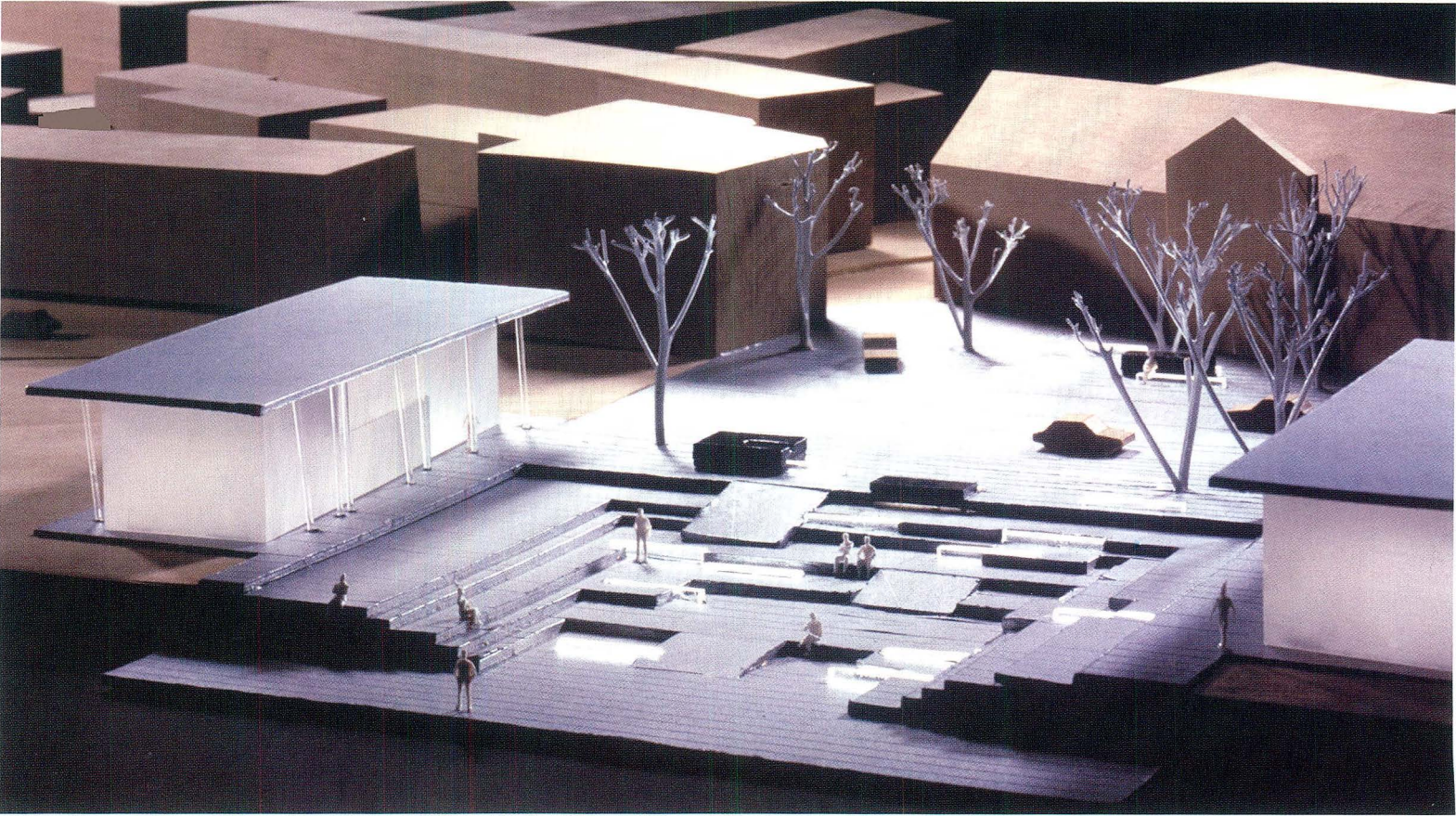
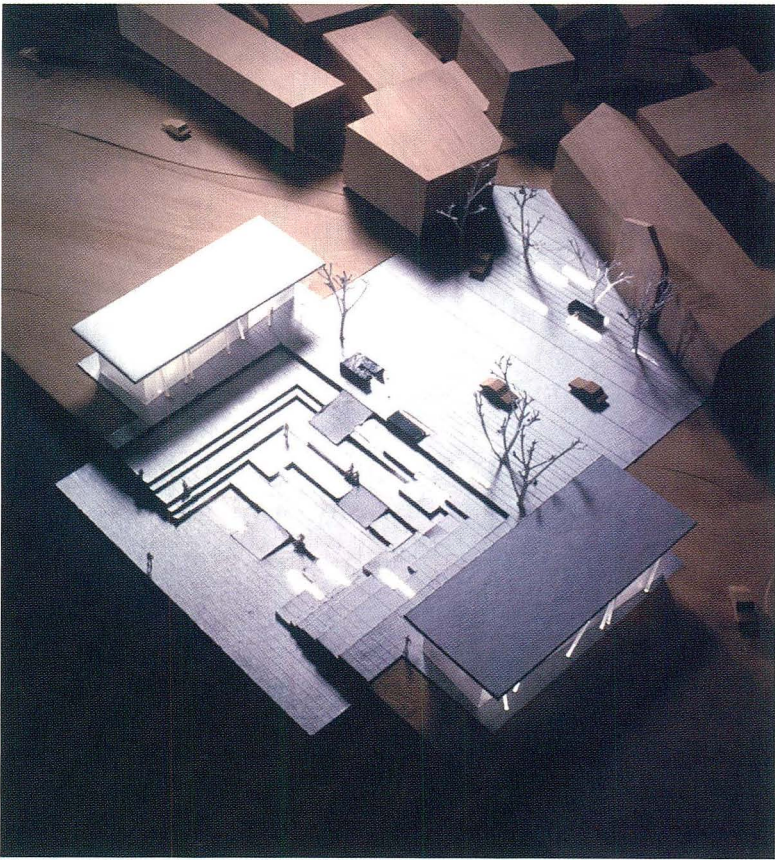
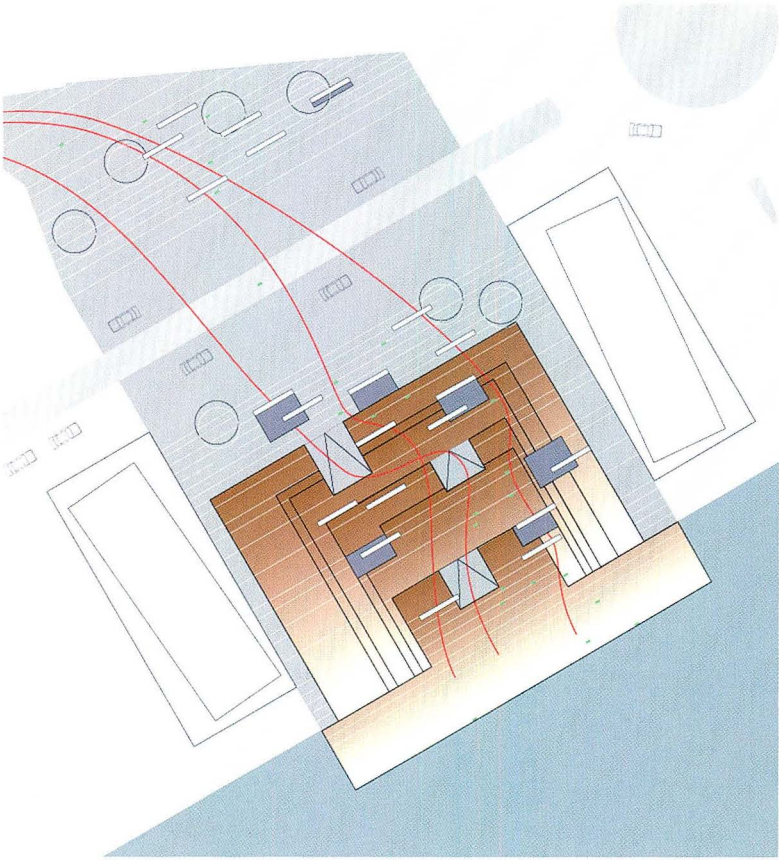


Section









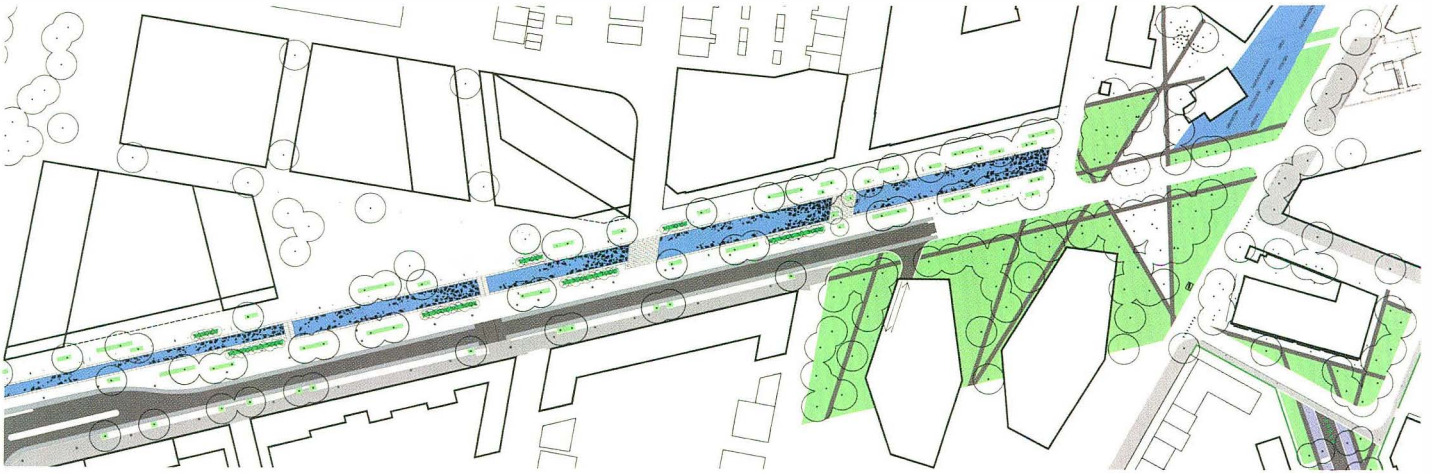












General plan



Section



Exploded view





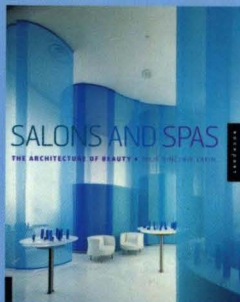


Over the last decade, landscape designers worldwide have rejuvenated public areas by incorporating water as a central feature. Far beyond the simple fountain, these designs reflect innovative and startling creativity, with noteworthy installations that document the drama and beauty that water can bring to a landscape design.

This book presents work from some of the best landscape designers in the world, and presents all the details behind the most interesting and dynamic water features being created. This stunning collection, which includes plans, drawings, and beautiful photographs, will inspire and inform both planners and designers on the possibilities for incorporating water into landscape design.

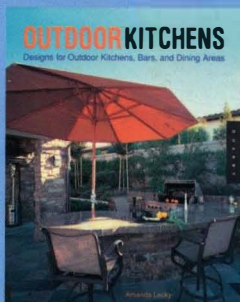
- Features designs from all over the world in a range of settings
- Includes sketches and drawings to provide a complete look into the design of each landscape project

**Also available from Rockport Publishers and Quarry Books:**



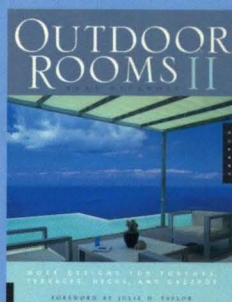
Salons & Spas

9253-165-2



Outdoor Kitchens

ISBN: 1-59253-203-9



Outdoor Rooms II

ISBN: 1-59253-299-3

SUB/DPT  
854

07/07/31

MEGASTORE

**147,00 DHS**

40.00 US  
27.50 UK  
52.00 CAN

9 781592 532735

[www.rockpub.com](http://www.rockpub.com)

ISBN-13: 978-1-59253-273-5  
ISBN-10: 1-59253-273-X

EAN

9 781592 532735

54000