

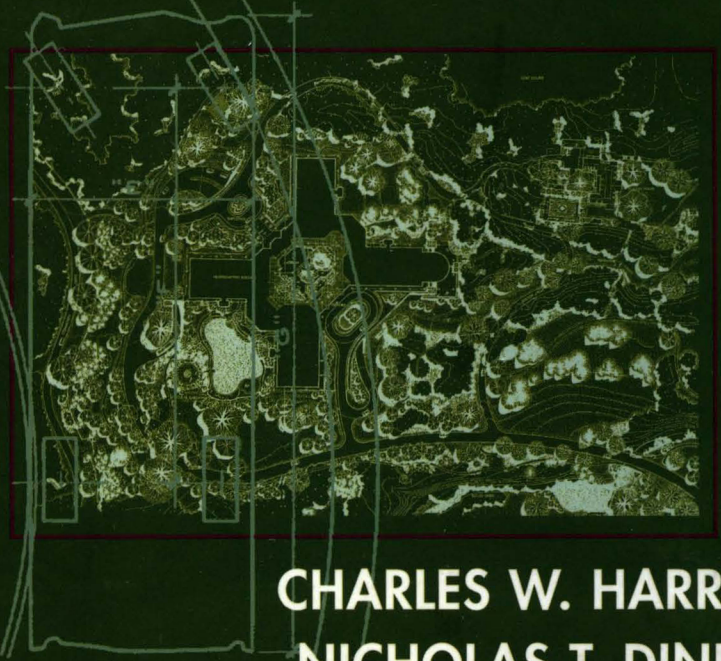
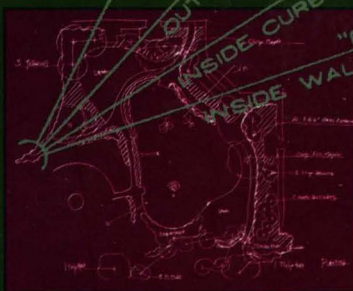
**TIME-SAVER**

**STANDARDS**

**SECTION-2**

**FOR  
LANDSCAPE  
ARCHITECTURE**

*second edition*



**CHARLES W. HARRIS  
NICHOLAS T. DINES**

**EXTENDED LENGTH VEHICLES  
DIMENSIONS AND TURNING RADII**

MAKE OF CAR	"A"	"B"	"C"	"D"	"E"	"F"	"G"
Cadillac	30'-0"	28'-6"	18'-11 1/2"	18'-9"	6'-11"	13'-0"	20'-10 1/4"
Dodge	23'-4"	21'-9"	13'-4 1/2"	12'-10 3/4"	6'-8"		18'-4"

# **TIME-SAVER STANDARDS** FOR LANDSCAPE ARCHITECTURE: DESIGN AND CONSTRUCTION DATA

■ **Second Edition** ■



CO-EDITORS

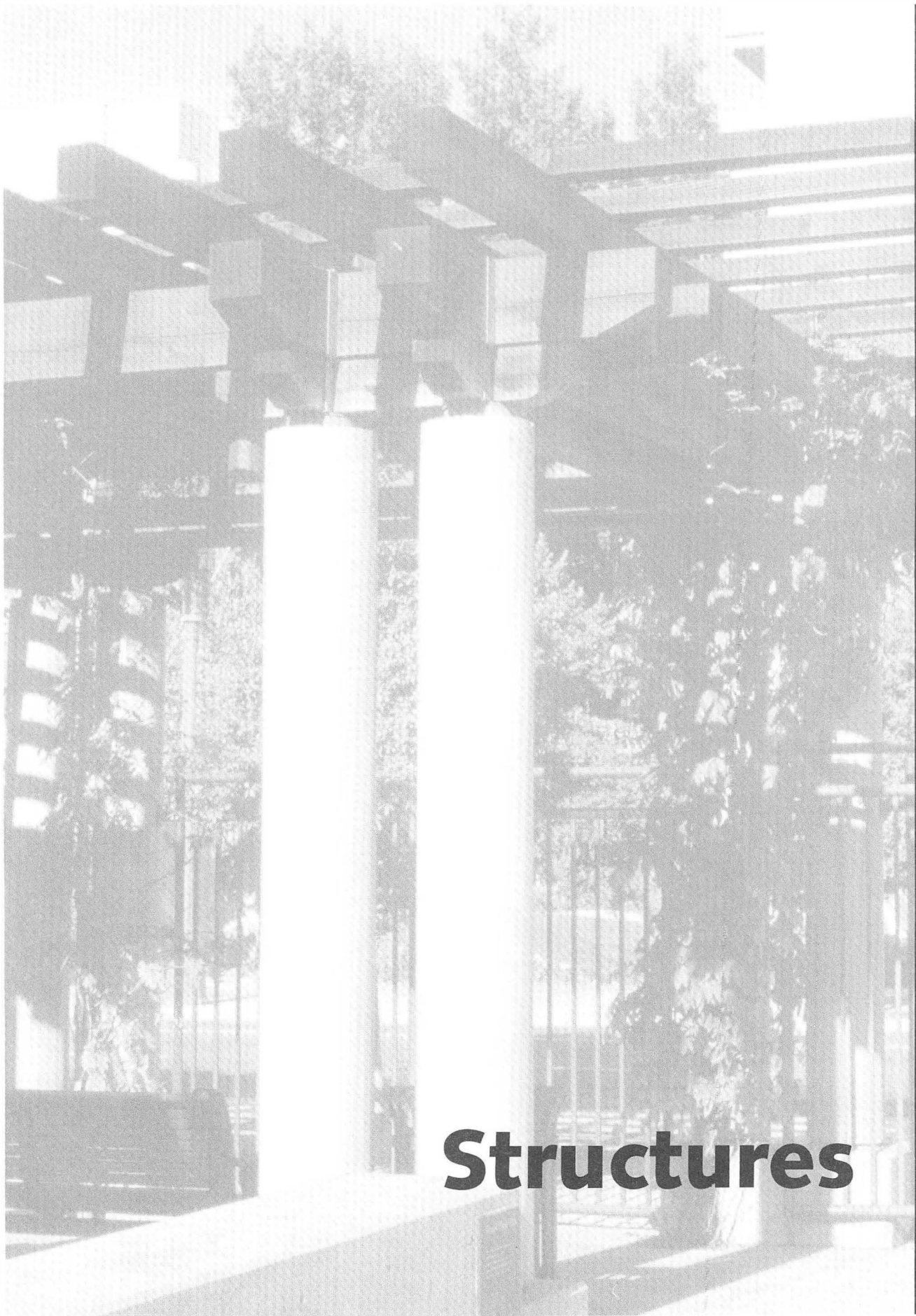
Charles W. Harris  
Nicholas T. Dines

ASSISTANT EDITOR

Kyle D. Brown

**McGraw-Hill Publishing Company**

New York ■ Washington, D.C. ■ Auckland ■ Bogotá ■ Caracas ■ Lisbon  
London ■ Madrid ■ Mexico City ■ Milan ■ Montreal ■ New Delhi ■ San Juan  
Singapore ■ Sydney ■ Tokyo ■ Toronto



# Structures

DIVISION 400

# Retaining Walls

## CREDITS

### Contributor:

Nicholas T. Dines, FASLA  
University of Massachusetts  
Amherst, Massachusetts

Domenico Annese, RLA, and Peter F.  
Martecchini, PE  
New York, New York

Information on metric calculations was  
provided by David Grahlman, P.E.,  
Gamsby and Mannerow, Ltd.,  
Guelph, Ontario

### Technical Writer:

Kyle D. Brown

### Reviewers:

Bradford G. Sears, RLA  
Fayetteville, New York

Stephen Hamway  
Sasaki Associates, Inc.  
Dallas, Texas



N. Dines

## CONTENTS

### 1.0 Introduction

- 1.1 Use of Retaining Structures
- 1.2 Design Parameters
- 1.3 Design Process

### 2.0 Selection Criteria for Retaining Structures

- 2.1 Reinforced Embankments
- 2.2 Unit and Stack Wall Systems
- 2.3 Rigid Retaining Walls

### 3.0 Elements of Retaining Structures

- 3.1 Subgrade
  - Properties of Soil
  - Soil Testing
- 3.2 Foundations
- 3.3 Drainage Devices
- 3.4 Batter in Wall Faces
- 3.5 Face Treatment

### 3.6 Expansion and Construction Joints

### 4.0 Types of Retaining Structures

- 4.1 Reinforced Embankments
- 4.2 Unit and Stack Wall Systems
  - Dry-Laid Stone Wall
  - Gabion Wall
  - Precast Unit Stack Wall
  - Earth Tieback Retaining Wall
  - Bin Wall
  - Crib Wall
  - Horizontal and Vertical Timber Wall
  - Green Retaining Wall
- 4.3 Rigid Retaining Walls
  - Gravity Wall
  - Cantilevered Wall

### 5.0 Mechanics and Design Calculations

- 5.1 Lateral Loading
- 5.2 Resultant of Wall Weight and Earth Pressure
- 5.3 Wall Stability Tests
  - Overturning
  - Settlement at the Toe
  - Sliding Horizontally

### 6.0 Drainage

- 6.1 Surface Run-off
- 6.2 Backfill and Footing Drains
- 6.3 Weep Holes

### 7.0 Maintenance

### References

# Small Dams

## CREDITS

### Section Editor:

Charles W. Harris

### Technical Writers:

Kyle D. Brown

Krisan Osterby-Benson

### Reviewers:

Alton P. Davis, Jr.

GEI Consultants, Inc.

Winchester, Massachusetts

Varoujian Hagopian

Sasaki Associates, Inc.

Watertown, Massachusetts

Steve J. Poulos

GEI Consultants, Inc.

Winchester, Massachusetts

### Illustrations:

Ginny Leonard

Ying Wang

Samuel Coplon



Jeffrey D. Blankenship

## CONTENTS

### 1.0 Introduction

### 2.0 Purposes of Dams

### 3.0 Selection of Dam Site

#### 3.1 Investigation of Potential Sites

#### 3.2 Survey of Proposed Site

### 4.0 Types of Dams and Selection Criteria

#### 4.1 Earthfill Embankment Dams

##### Types of Earthfill Embankment Dams

##### Foundations for Earthfill Embankment Dams

##### Top Width Dimensions

##### Settlement Allowance

##### Freeboard

##### Side Slopes

#### 4.2 Diaphragm Rockfill Dams

##### Materials

##### Placement

##### Foundations

##### Profile

##### Granular Base for Membrane

##### Typical Membranes

#### 4.3 Masonry Dams

##### Foundations

##### Nonoverflow Design

##### Overflow Design

##### Wing Walls

##### Aprons

#### 4.4 Timber or Precast Concrete Cribbing Dams

##### Beaver-Type Dams

##### Crib Dams

### 5.0 Stability Analysis of Gravity Dams

#### 5.1 Forces Acting on Gravity Dams

#### 5.2 Calculation of Stability

##### General Stability

##### Overturning

##### Crushing

##### Horizontal Sliding

### 6.0 Design of Major Components

#### 6.1 Foundations

##### Types of Foundations

##### Bearing Strength of Foundations

##### Sliding

#### 6.2 Drainage Problems

##### Masonry or Timber Dams

##### Earthfill Embankment Dams

#### 6.3 Filter Drains

##### Pervious Downstream Shells

##### Horizontal Drainage Blankets

##### Toe Drains

##### Drainage Trenches

##### Filter Drain Requirements

#### 6.4 Cutoffs

##### Cutoff Trenches

##### Cutoff Walls

#### 6.5 Surface Drainage

#### 6.6 Spillways and Fish Ladders

##### Masonry Spillways

##### Earth Spillways

##### Fish Ladders

#### 6.7 Outlets

#### 6.8 Dam Facing

##### Upstream Slope Protection

##### Downstream Slope Protection

### References

# Surfacing and Paving

## CREDITS

### Section Editor:

Nicholas T. Dines

### Consultant:

Royston, Hanamoto, Alley, and Abey  
Mill Valley, California

### Reviewers:

Robert Fager  
Sasaki Associates, Inc.  
Watertown, Massachusetts

Charles W. Harris, Emeritus Professor  
Harvard Graduate School of Design  
Cambridge, Massachusetts



N. Dines

## CONTENTS

### 1.0 Introduction

- 1.1 General
- 1.2 Pavement Contexts

### 2.0 Basic Components

- 2.1 Subgrade
- 2.2 Aggregate Base and Subbase
- 2.3 Pavement
  - Flexible Pavements
  - Rigid Pavements
  - Porous Pavements
- 2.4 Pavement Edge
  - Aggregate Base Extension

- Edge Thickening
- Edge Restraint
- Clay Soil Strategies

### 2.5 Pavement Joints

### 3.0 Pavement Design Criteria

- 3.1 Application
  - Load-Bearing Ability
  - Durability
  - Safety
  - Aesthetics
- 3.2 Climate
- 3.3 Subgrade

### 3.4 Cost and Maintenance

- Cost
- Maintenance
- 4.0 Materials Selection
- References

# Fences, Screens, and Walls

## CREDITS

### Section Editor:

Nicholas T. Dines

### Contributors:

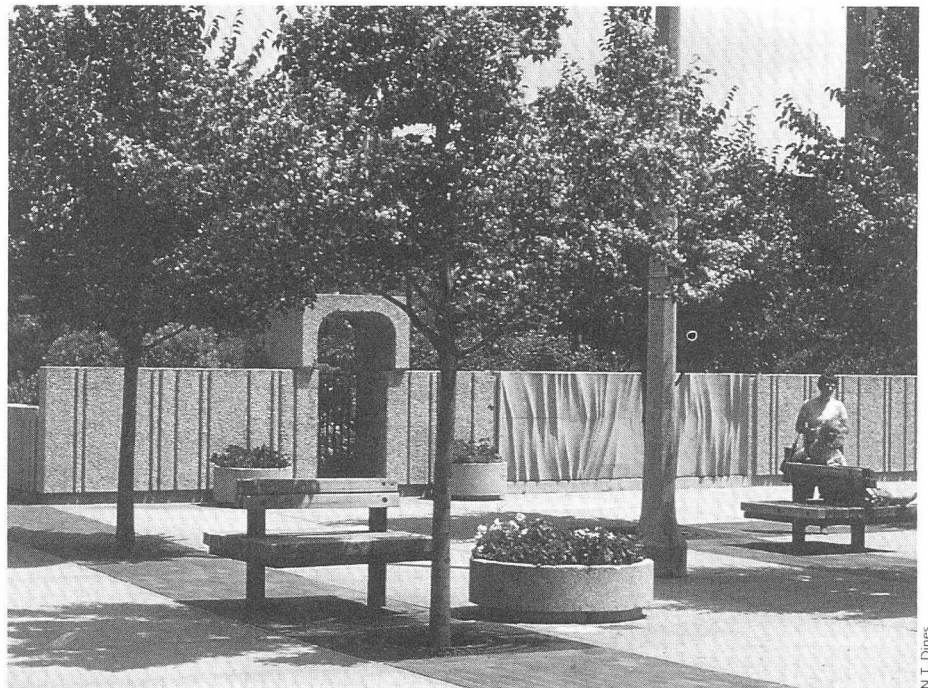
Don Hilderbrandt,  
Patrick Mullaly and Kathleen Bogaski  
LDR International, Inc.  
Columbia, Maryland

### Assistants:

David R. Holden  
Cynthia L. Riemer  
Charles H. Shaw, Jr.  
Nancy Takahashi  
Charles E. Bailey

### Reviewers:

Kenneth DeMay  
Sasaki Associates, Inc.  
Watertown, Massachusetts



N.T. Dines

## CONTENTS

### 1.0 Introduction

#### 1.1 General

#### 1.2 Design Process

#### 1.3 Design Considerations

Purposes

Design Criteria

Site Context

Off-Site Impact

Design Expression

Legal and Code Requirements

Feasibility

### 2.0 Construction Methods and Details

#### 2.1 Footings and Foundations

Footing Depth

Soil Conditions

Drainage

Posts and Footings

Wind Control

Uneven Terrain

#### 2.2 Wooden Fences and Screens

Selecting Wood Materials

Structural Framework

Fencing Materials

Wood Preservatives and Finishes

Joining and Fastening

#### 2.3 Metal Fences

Metal Picket Fences

Metal Fabric Fencing

#### 2.4 Brick and Concrete Block Walls

Brickwork Patterns

Joints

Moisture Control

Brick Cap Units

Reinforcement

#### 2.5 Stone Walls

Stonework Patterns

Mortar Mix

#### 2.6 Poured Concrete Walls

#### 2.7 Miscellaneous Barrier Materials

#### 2.8 Gates

2.9 Connections to Buildings or Other Structures

2.10 Maintenance around the Base of Walls and Fences

2.11 Reproducing Historic Styles

### References

# Wood Decks and Boardwalks

## CREDITS

### Contributor:

Gary M. Fishbeck

### Technical Writer:

Jeffrey D. Blankenship

### Graphics:

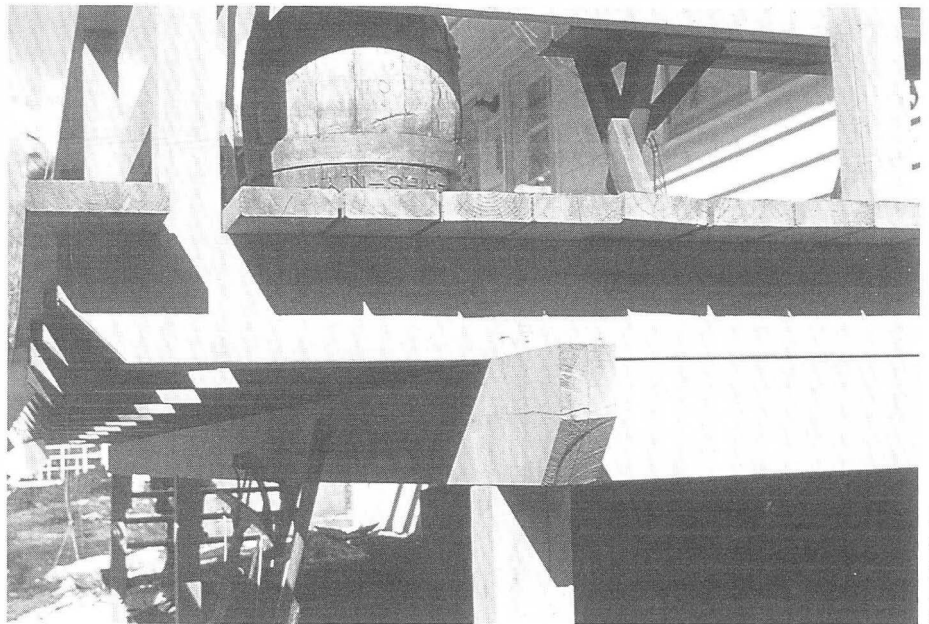
John Copley  
John Copley and Associates, Inc.  
Boston, Massachusetts

### Reviewers:

J. Brooks Breeden  
Department of Landscape Architecture  
School of Architecture  
Ohio State University  
Columbus, Ohio

Olin Fralick  
Marvin & Associates, Inc.  
Walterboro, South Carolina

Thomas and Heather Ryan  
Sasaki Associates, Inc.  
Watertown, Massachusetts



Michael Davidsohn

## CONTENTS

### 1.0 Introduction

- 1.1 General
- 1.2 Design Process
- 1.3 Preliminary Design Considerations

### 2.0 Principles of Construction

- 2.1 Framing Methods
  - Platform Framing
  - Plank-and-Beam Framing
- 2.2 Basic Components
  - Decking
  - Joists
  - Beams
  - Posts
  - Footings
  - Bracing and Blocking
  - Stairs and Railings
- 2.3 Maintenance

### 3.0 Materials

- 3.1 Selection of Materials
- 3.2 Wood
  - Decay Resistance
  - Lumber Grades
- 3.3 Hardware
  - Anchors, Hangers, and Plates
  - Nails
  - Wood Screws
  - Bolts
- 3.4 Masonry
- 3.5 Other Materials
  - Plant Materials
  - Metals
  - Plastics
  - Fabrics

### 4.0 Sizing Wood Members

- 4.1 Using Span Tables
- 4.2 Sizing Example
- 4.3 Post Sizing
- 4.4 Beam Sizing
- 4.5 Joist Sizing
- 4.6 Decking Sizing

### 5.0 Construction Details

- Glossary
- Agencies and Organizations
- References



# Pedestrian Bridges

## CREDITS

### Section Editor:

Charles W. Harris

### Technical Writers:

Jeffrey D. Blankenship  
Tess Canfield

### Research Assistant:

Gary Schiff

### Selected Graphics:

Jeffrey Lakey

### Reviewers:

Hans Willian Hagen, P.E.  
LeMessurier Associates, Inc.  
Cambridge, Massachusetts

Stephen E. Hamwey, P.E.  
Sasaki Associates, Inc.  
Watertown, Massachusetts

Anthony Hunt  
Anthony Hunt Associates  
London, England

Henry H. Liede  
Kane, Liede & Ratyna, P.C.  
Pleasantville, New York



N. Dimes

## CONTENTS

### 1.0 Introduction

### 2.0 Design Considerations

- 2.1 *Defining the User*
- 2.2 *Spatial Standards*
- 2.3 *User Safety*
  - General
  - Landings, Rest Areas, and Handrailings
  - Decking and Surface Treatments

### 3.0 Bridge Construction

- 3.1 *Site Selection and Survey*
  - Selection Criteria
  - Site Survey
- 3.2 *Selection of Footbridge Type*
  - Basic Components
  - Selection Chart
  - Additional Considerations
- 3.3 *Selection of Main Structural Members*
- 3.4 *Loadings on the Bridge's Superstructure*
  - Types of Loading

- Design Loading
- User Loads for Narrow Footbridges
- Pedestrian Loading
- Horse and Rider Loading
- Deflections
- 3.5 *Substructures (Foundations)*
  - Loading on Substructures
  - Foundations and Soil Bearing Capacity
  - Choice of Foundation (Footings or Piles)
  - Types of Abutments
  - Wing Walls
  - Simple Abutments for Footbridges
  - Piers
  - Excavation Shape and Shear Keys
  - Inclined Footing
  - Drainage
  - Bearing Shelves
  - Protective Coatings
  - Groundwater
  - Flood Damage and Scour

### Bearings

### 4.0 Typical Designs for Short-Span Footbridges

- 4.1 *Log Footbridge*
- 4.2 *Sawn Timber Footbridge*
- 4.3 *Galloway Timber Footbridge*
- 4.4 *Galloway Steel Footbridge*
- 4.5 *Steel Beam Footbridge*
- 4.6 *Suspension Bridge*
- 4.7 *Concrete or Masonry Arch Footbridge*

### 5.0 Typical Designs for Prefabricated Bridges

### 6.0 Problems of Erecting Bridges

### 7.0 Maintenance of Bridges

- 7.1 *Maintenance in Design*
- 7.2 *Maintenance in Construction*
- 7.3 *Maintenance in Use*
- 7.4 *Inspection*

### References

# Site Furniture and Features

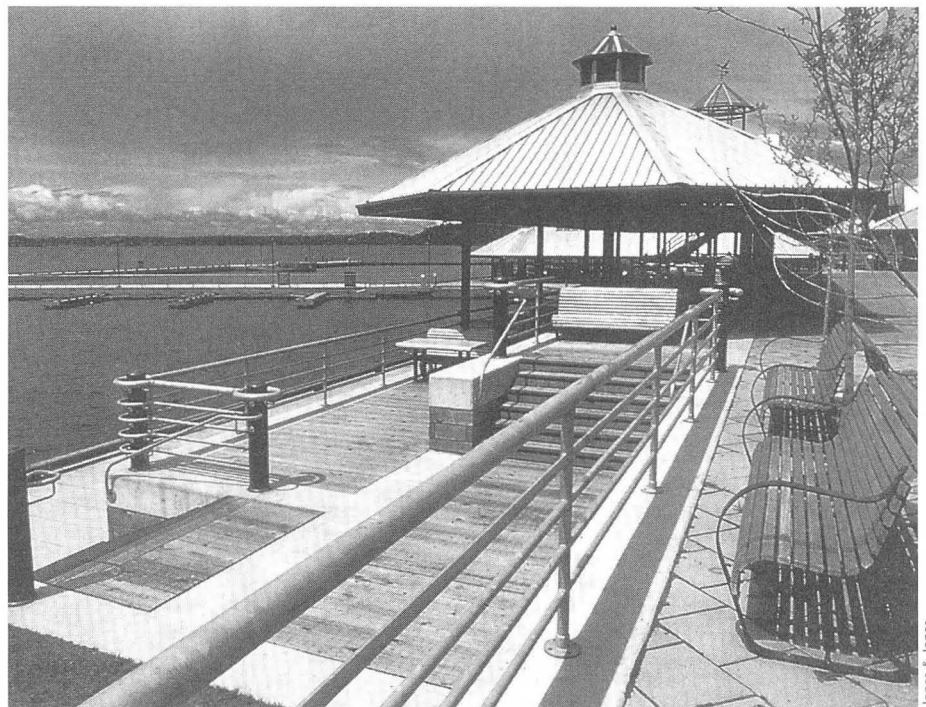
## CREDITS

### Contributor:

Ilse Jones, G. H. Lee,  
and Kevin M. Carl  
Jones & Jones, Architects  
and Landscape Architects  
Seattle, Washington  
Portland, Oregon

### Reviewers:

Nicholas T. Dines  
University of Massachusetts  
Amherst, Massachusetts



Jones & Jones

## CONTENTS

### 1.0 Introduction

- 1.1 General
- 1.2 Design Objectives
  - Appropriateness
  - Response to Setting

### 2.0 Design Determinants

- 2.1 Cultural Factors
  - Social Context
  - Political Context
- 2.2 Physical Factors
  - Climate
  - Physiography
  - Built Environment

### 2.3 Environmental Factors

- Temperature
- Precipitation
- Wind
- Light
- Noise

### 2.4 Operational Factors

- Human Body Dimensions and Movement
- Regulatory Standards

### 3.0 Design Considerations

- 3.1 Selection Process
- 3.2 Design Elements

### References

# Recreational and Athletic Facilities

## CREDITS

### Contributors:

James D. Mertes, Ph.D.  
Department of Park, Recreation and  
Tourism Resources  
Michigan State University  
East Lansing, Michigan

Professor Gaylan Rasmussen, BLA, MLA  
Department of Park, Recreation and  
Tourism Resources  
Michigan State University  
East Lansing, Michigan

Kay Hutmacher, ASLA  
Fresno, California

Gene Schrickel, Terry Cheek,  
and Victor Baxter  
Schrickel, Rollins and Associates  
Arlington, Texas

### Technical Writer:

Jeffrey D. Blankenship

### Research Assistants:

Robert B. Ruth  
E. Brian Bristow

### Reviewers:

Kevin A. Nelson, Ph. D. Candidate  
Department of Parks,  
Recreation and Tourism  
Michigan State University  
East Lansing, Michigan

Professor Emeritus Louis F. Twardzik  
Department of Parks,  
Recreation and Tourism  
Michigan State University  
East Lansing, Michigan

Albert J. Rutledge, Professor & Chairman  
Department of Landscape Architecture  
Iowa State University  
Ames, Iowa



Monty L. Christiansen,  
Associate Professor,  
Department of Recreation and Parks  
Pennsylvania State University  
University Park, Pennsylvania

## ACKNOWLEDGMENTS

The authors would like to acknowledge the aid and insight provided by Mr. Ernie Ralston, landscape architect, Marshall, Maklin, Monaghan Limited, Edmonton, Alberta; and Mr. Garrett Gill, Department of Park Administration and Landscape Architecture, Texas Tech University, Lubbock, Texas; and David Gill Corporation (golf course architect), St. Charles, Illinois.

# Pools and Fountains

## CREDITS

### Contributor:

Richard Chaix  
CMS Collaborative  
Carmel, California

### Illustrations:

Rick Briggs  
President  
SCS Interactive  
Springfield, Illinois

### Reviewers:

Angela Danadjieva  
Danadjieva and Koenig Associates  
Tiburon, California

Edward Janelli, Senior Landscape  
Architect  
Department of Public Works  
City of San Francisco, California

E. Byron McCulley  
Amphion Environmental, Inc.  
Oakland, California

Kevin Shanley  
The SWA Group



N. Dimes

## CONTENTS

### 1.0 History

### 2.0 Purpose of Water Displays

#### 2.1 Aesthetic Factors

Visual  
Psychological  
Auditory  
Sensory Effects

#### 2.2 Functional Reasons

Recreation  
Circulation Control  
Utilitarian

### 3.0 Water

#### 3.1 Quantification

Capacity  
Flowrate  
Pressure

#### 3.2 Water Quality

Supply  
Chemical Treatment  
Biological Balance

### 4.0 Water Effects

#### 4.1 Classification and Description

Still Water  
Moving Water

#### 4.2 Characteristics of Various Effects

#### 4.3 Applications

#### 4.4 Design

Design Criteria for Various Effects  
Accommodations of Mechanical  
System

#### 4.5 Maximization of Water Effect

Transit Time  
Air Entrainment  
Readability

#### 4.6 Optimization of Water Effect

Graphic and Model Studies  
Observation of Precedent  
Prototype Testing  
Field Adjustment

### 5.0 Containers and Structures

#### 5.1 Environment

Scale  
Setting  
Topography  
Climate  
Support Medium  
Surrounding Materials

#### 5.2 Construction Budget

#### 5.3 Materials

Native Soil and Clay  
Concrete  
Stone  
Brick  
Wood, Metal, and Fiberglass

#### 5.4 Cross-Sectional Configuration

Relationship to Plaza Level  
Edge Conditions  
Depth, Freeboard, and Clearance  
from Displays

# Outdoor Lighting

## CREDITS

### Section Editor:

Nicholas T. Dines

### Contributor:

Robert Prouse  
HM Brandston and Partners Inc.  
New York, New York

Michael Sardina  
The SWA Group, Inc.  
Boston, Massachusetts

Alan Fujimori  
Honolulu, Hawaii

### Technical Writer:

Kyle D. Brown

### Reviewers:

Peter Coxe  
William Lam Associates  
Cambridge, Massachusetts  
Kenneth E. Bassett  
Sasaki Associates, Inc.



Kyle D. Brown

## CONTENTS

### 1.0 Introduction

- 1.1 General
- 1.2 Objectives of Outdoor Lighting

### 2.0 Terminology

### 3.0 General Design Principles

- 3.1 Orientation
  - Lighting Hierarchy
  - Clear Lighting Patterns
- 3.2 Identification
  - Intersection Articulation
  - Placement of Luminaires
  - Deciding What to Light
- 3.3 Safety
  - Glare
  - Underlighting
- 3.4 Security
  - Walkway Lights
  - Surveillance
  - Vandalism

### 3.5 Atmosphere and Character

- Background
- Foreground
- Illumination of Objects (Shape Accentuation)
- Color Perception

### 4.0 Lamp Characteristics and Light Distribution

- 4.1 Lamp Characteristics
  - Incandescent Lamps
  - Fluorescent Lamps
  - Mercury Vapor Lamps (Deluxe White)
  - Induction Lamps
  - Metal Halide Lamps
  - High-Pressure Sodium Lamps
  - 'White' High-Pressure Sodium Lamps
  - Low-Pressure Sodium Lamps
- 4.2 Light Distribution
  - Horizontal and Vertical Distribution

- Basic Light Distribution Patterns
- Uniformity
- Cutoff

### 4.3 Categories of Light Fixtures

- Low-Level Landscape Lights
- Intermediate-Height Landscape Lights
- Parking Lot and Roadway Lights
- High-Mast Lights

### 4.4 Landscape Lighting Effects

- Uplighting
- Moonlighting
- Silhouette Lighting
- Spotlighting
- Spreadlighting
- Pathlighting

### 5.0 Low Voltage Systems

### 6.0 Recommended Levels of Illumination

### References

# Plants and Planting

## CREDITS

### Section Editor:

Nicholas T. Dines

### Technical Writers:

David Kvinge

Sarah Gronquist

Jeffrey D. Blankenship

### Reviewers:

Dr. David Bloniarz

Urban Forester

Department of Forestry  
and Wildlife Management  
University of Massachusetts  
Amherst, MA

Dr. Dennis Ryan

Department of Forestry  
and Wildlife Management  
University of Massachusetts  
Amherst, MA

The original first edition illustrations  
for this section were supplied by  
Michael Van Valkenburgh Associates,  
Cambridge, Massachusetts.



N. Dines

## CONTENTS

### 1.0 Introduction and Purpose

#### 2.0 Design Criteria

##### 2.1 Major Functions of Plant Materials

Aesthetics

Environmental Modification

Screening

Circulation Control

Production

Bioengineering and Other Forms of  
Structural Mitigation

##### 2.2 Cost

Specimen Plantings

Plantings vs. Hardscape Costs

##### 2.3 Hardiness

##### 2.4 Safety Considerations

Poisonous Plants

Litter-producing Plants

Weak-branched Plants

Plants with Drooping Branches

Plants with Shallow Roots

Thorned Plants

Plants that Attract Insects

##### 2.5 Maintenance Considerations

Proximity to Mechanical Activity

Placement of Plantings

Diversity of Plant Communities

Disease and Insect Resistance

Proximity of Plants

Long-Term Maintenance Costs

#### 3.0 Assessing Existing Vegetation

##### 3.1 Protecting Existing Plant Materials

During Construction

Long-Term Protection

##### 3.2 Invasive Species

#### 4.0 Planting Plans, Details, and Specifications

##### 4.1 Proper Techniques for Planting

Condition of Plants Upon Installation

Planting Holes

Mulches and Fertilization

Backfills

Trunk Wrapping and Sunburn

Staking and Guying

Pruning at Planting Time

##### 4.2 General Notes on Planting Plans

##### 4.3 Notes and Details

Notes

Planting Details

##### 4.4 Contract Specifications

##### 4.5 Standards for Nursery Stock

#### 5.0 Management Strategies

#### 6.0 Specialized Planting Strategies

##### 6.1 Using Native Plants

##### 6.2 Xeriscaping and Water-Efficient Landscapes

Planning and Design

Soil Analysis and Improvements

Practical Turf Areas

Characteristics of Appropriate

Drought-Tolerant Plants

Efficient Irrigation

Mulching

Appropriate Maintenance

##### 6.3 Urban Forestry

##### 6.4 Planting on Disturbed Sites

##### 6.5 Planting for Bioengineering

#### References

# Roof and Deck Landscapes

## CREDITS

### Contributor:

Theodore Osmundson & Associates  
Theodore Osmundson, writer  
Gordon Osmundson, editor  
San Francisco, California

### Graphics:

Theodore Osmundson, FASLA  
April Potter

### Technical Writer:

Kyle D. Brown

### Research Advisor:

Ralph E. Wilcoxon  
Berkeley, California

### Reviewers:

Thomas Wirth, ASLA  
Sherborn, Massachusetts

William L. Clarke  
EDAW  
San Francisco, California

Fred H. Peterson  
Soil & Plant Lab, Inc.  
Santa Clara, California



Theodore Osmundson

## CONTENTS

### 1.0 Introduction

### 2.0 Protection of the Roof and Structure

- 2.1 Load Bearing Capacity
- 2.2 Waterproofing

### 3.0 Special Provisions

- 3.1 Drainage
- 3.2 Lightweight Planting Medium
  - Fine Sand
  - Soil Amendments
  - Depths and Weights of Planting Medium and Plants
  - Ways to Reduce Weight

### 3.3 Adaptation to Climate

- Climate
- Wind
- Sun and Shade

### 3.4 Irrigation

### 4.0 Selection of Materials and Methods of Anchoring

- 4.1 Structural Materials
- 4.2 Paving
- 4.3 Methods of Anchoring

### 5.0 Pools and Fountains

- 5.1 General Considerations

### 5.2 Waterproofing and Anchoring Pool Walls

### 6.0 Provision for Utilities

- 6.1 Electrical
- 6.2 Water

### 7.0 Safety and Security

### 8.0 Maintenance

- 8.1 Paving, Fixtures, and Furnishings
- 8.2 Plant Maintenance

### References

# Interior Landscapes

## CREDITS

### Contributors:

Jay Graham  
Graham Landscape Architecture  
Annapolis, Maryland

Nelson Hammer, ASLA  
Hammer Design  
Boston, Massachusetts

Gerard Leider  
Rentokil Environmental Services  
Riverwoods, Illinois

### Technical Writer:

Kyle D. Brown

### Reviewers:

Ellen Carlsen  
Rentokil Environmental Services  
Burtonsville, Maryland



Nelson Hammer

## CONTENTS

### 1.0 Introduction

### 2.0 Physical Requirements of Plants

#### 2.1 Light

Intensity  
Duration  
Quality

#### 2.2 Temperature, Humidity, and Air Quality

Temperature  
Relative Humidity  
Air Quality

#### 2.3 Water

#### 2.4 Planting Medium

#### 2.5 Space/Volume

#### 2.6 Weight of Plants

#### 2.7 Acclimatization

#### 2.8 Maintenance

### 3.0 Techniques to Meet Physical Requirements

#### 3.1 Light

Daylight  
Windows + Clerestories  
Skylights  
Glazing Materials  
Electric Light

#### 3.2 Air

#### 3.3 Water

Hand Watering  
Automatic Systems

#### 3.4 Planting Medium

#### 3.5 Construction Details

### 4.0 Design Process

### 5.0 Plant Palette

#### 5.1 Design Objectives

#### 5.2 Character of Interior Plants

Size  
Growth Habit  
Texture  
Color

#### 5.3 Design Suggestions

#### 5.4 Commonly Used Plants

Size Categories  
Plant List  
Environmental Conditions

### References



# Disturbed Landscapes

## CREDITS

### Contributors:

William Agnew  
REVEG Environmental Consulting, Inc.  
Fort Collins, Colorado

Herbert R. Schaal  
EDAW, Inc.  
Fort Collins, Colorado

Marc Theisen  
Synthetic Industries  
Chattanooga, Tennessee

### Reviewers:

Dr. David Johnson  
Western Ecological Resources  
Boulder, Colorado

Dr. Edward F. Redente  
Shepard Miller, Inc.  
Fort Collins, Colorado



Herbert R. Schaal, EDAW, Inc.

## CONTENTS

### 1.0 Introduction

#### 1.1 Problem of Erosion

### 2.0 Reclamation Process

#### 2.1 Establishing Objectives

Meeting Government Standards  
Economic and Social Objectives  
Environmental Objectives  
Evaluation of Objectives

#### 2.2 Factors Influencing Methods of Reclamation

Soil Characteristics  
Vegetation  
Other Considerations

#### 2.3 Selecting Appropriate Reclamation Methods, Materials, and Developing a Plan

### 3.0 Protection of Soil, Water Quality, and Adjacent Undisturbed Areas

3.1 Use of Sediment and Erosion Control Devices  
Sediment Control Techniques  
Sediment Basins

Strawbale Dikes

Silt Fences

Gravel Bag Structures

Continuous Berms

Rock Check Dams

#### 3.2 Erosion Control Technologies

#### 3.3 Temporary Degradable Materials

Mulches

Tackifiers

Biaxially Oriented Process Nets

Bonded Fiber Matrix Systems

Fiber Roving Systems

Erosion Control Blankets/Mats

#### 3.4 Turf Reinforced Mats

#### 3.5 Hard Armor Systems

Geocellular Containment Systems

Fabric Formed Revetments

Concrete Block Systems

Gabions

Rip-rap

### 4.0 Landshaping and Stratigraphy

Landshaping

Stratigraphy

### 5.0 Surface Conditioning

Topsoil

Stabilizing Topsoil

Improving Water Retention Capacity

Modifying Acidic Soils

Modifying Saline Soils

Applying Fertilizers

Seedbed Preparation

Mulches

### 6.0 Planting

Temporary Erosion Control Plantings

Permanent Plantings

Selecting Plant Material

Acquiring Plant Material

Native Regrowth

Nursery Stock

Seeding Methods

Planting Schedules

### 7.0 Establishment and Maintenance of Vegetation

References

# Sound Control

## CREDITS

### Contributors:

Walter Kehm  
E. D. A. Collaborative, Inc.  
Toronto, Ontario  
Canada

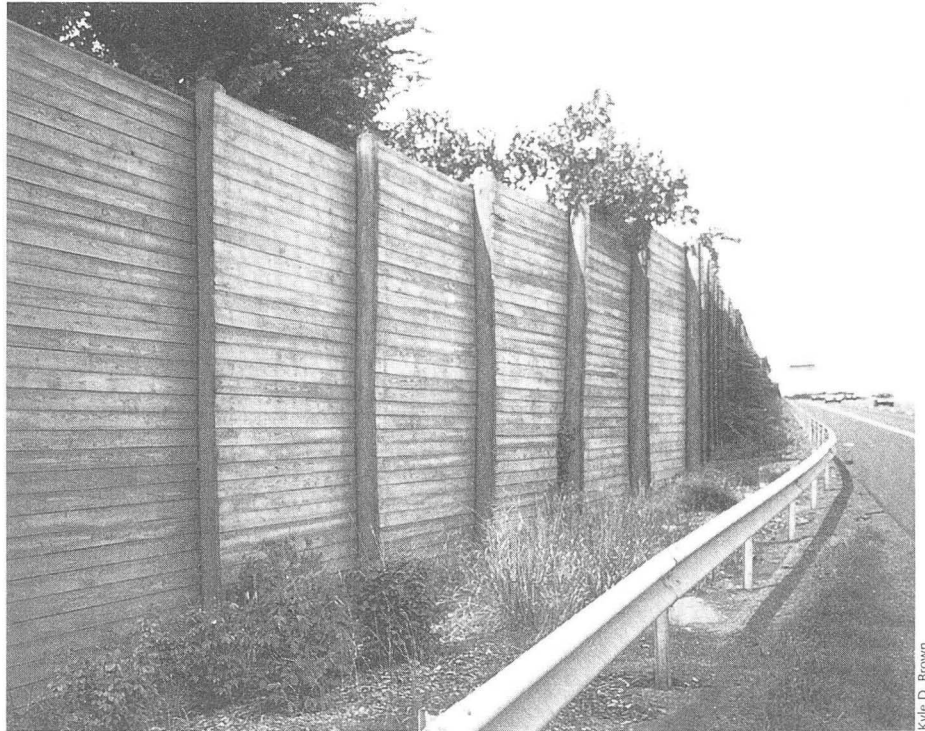
Phillip Ellis  
Wimpey Laboratories, Ltd.  
Hayes, Middlesex  
England

### Reviewers:

J. R. Wear  
Ministry of Transportation and  
Communications  
Province of Ontario  
Downsview, Ontario  
Canada

Robert Armstrong  
Federal Highway Administration  
Washington, D.C.

Robert Newman  
Christopher Menge  
Bolt Beranek and Newman Inc.  
Cambridge, Massachusetts



Kyle D. Brown

## CONTENTS

### 1.0 Introduction

- 1.1 *Basic Approaches to Sound Control*
  - Acoustical Planning (Preplanning)
  - Retrofitting
- 1.2 *Acoustic Variables*
  - Source of the Sound
  - Path and Distance of Sound
  - Transmission
  - Receiver of the Sound

### 2.0 Physics of Sound

- 2.1 *Nature of Sound Waves*
- 2.2 *Sound Pressures and Decibels*

### 3.0 Noise

- 3.1 *Definition and Sources of Noise*
- 3.2 *Psychological Response to Noise*
- 3.3 *Units of Noise Measurement*
  - $L_{eq}$  (Equivalent Noise Level)
  - $L_{dn}$  (Day-Night Equivalent Noise Level)
  - $L_n$

### 4.0 Noise Estimations and Calculations

- 4.1 *Traffic Noise*
- 4.2 *Train Noise*

### 4.3 *Aircraft Noise*

### 4.4 *Industrial Noise*

### 5.0 Noise Control Standards

- 5.1 *Acceptable Sound Levels in Residential and Recreational Environments*
- 5.2 *Noise Rating*
- 5.3 *Sound Level Zoning and Land Use Planning*

### 6.0 Control of Noise-Outdoors

- 6.1 *Source of the Sound*
- 6.2 *Path and Distance of the Sound*
  - Transmission
  - Effect of Distance from a Point Source
  - Effect of Distance from a Line Source
  - Other Effects (Point and Line Sources)
- 6.3 *Sound Barriers*
  - Distance (Placement of Barrier)
  - Height of Barrier
  - Continuity of Barrier
  - Length of Barrier
  - Physical Mass of a Barrier (Material)
- 6.4 *Earth Berms*

### 6.5 *Barrier Walls and Earth Berms*

### 6.6 *Vegetation*

### 6.7 *Building Layout and Site Selection*

### 7.0 Design Principles

- 7.1 *Design Criteria*
- 7.2 *Aesthetic Issues*
  - Planes
  - Mass
  - Texture

### 8.0 Design Application (Case Studies)

- 8.1 *Recreational Development (Example Problem)*
- 8.2 *Residential Development (Example Problem)*
- 8.3 *Industrial Development: Open-Pit Mine (Example Problem)*
- 8.4 *Industrial Development: Steel Plant (Example Problem)*

### 9.0 Maintenance Considerations

- 9.1 *Earth Berms*
- 9.2 *Barrier Walls*

### References

# Water Supply

## CREDITS

### Contributor:

Daniel Bubly, P.E., L.A., A.I.C.P.  
Bubly Associates, Inc.  
Sharon, Massachusetts

### Graphics:

Joseph C. Cloud  
  
Mark B. Darnold, P.E.,  
The Berkshire Design Group, Inc.  
Northampton, Massachusetts

### Reviewer:

Robert T. Ferrari, P.E.  
Ferrari-Atwood Engineering, Inc.  
Providence, Rhode Island



Jeffrey D. Blankenship

## CONTENTS

### 1.0 Introduction

### 2.0 Standards and Criteria

- 2.1 Water Quality
- 2.2 Water Quantity
- 2.3 Fire Fighting Requirements
- 2.4 Non-agricultural Irrigation

### 3.0 Sources of Water

- 3.1 General
- 3.2 Low-Yield Systems
  - Wells
  - Cisterns
  - Surface Catchments
- 3.3 High-Yield Wells
- 3.4 Surface Water Supplies

### 4.0 Constraints on Well Development

- 4.1 Proximity to Seawater
- 4.2 Proximity to Organic Deposits
- 4.3 Land Use Density and Waste Disposal
  - Relationship between Sewage Leaching Systems and the Water Table
  - Density of Development
- 4.4 Industrial and Waste Contamination

### 5.0 Groundwater Flow Analysis

### 6.0 Well Recharge Area Analysis

### 7.0 Reservoir Design Considerations

- 7.1 Size of Watershed
- 7.2 Size of Reservoir
- 7.3 Shape and Depth of Reservoir

### 7.4 Watershed Characteristics

- 7.5 Dam Location
- 7.6 Water Treatment
- 7.7 Site Preparation
- 7.8 Consultants

### References

# Sewage Disposal

## CREDITS

### Contributor:

Mark B. Darnold, P.E.,  
The Berkshire Design Group, Inc.  
Northampton, Massachusetts

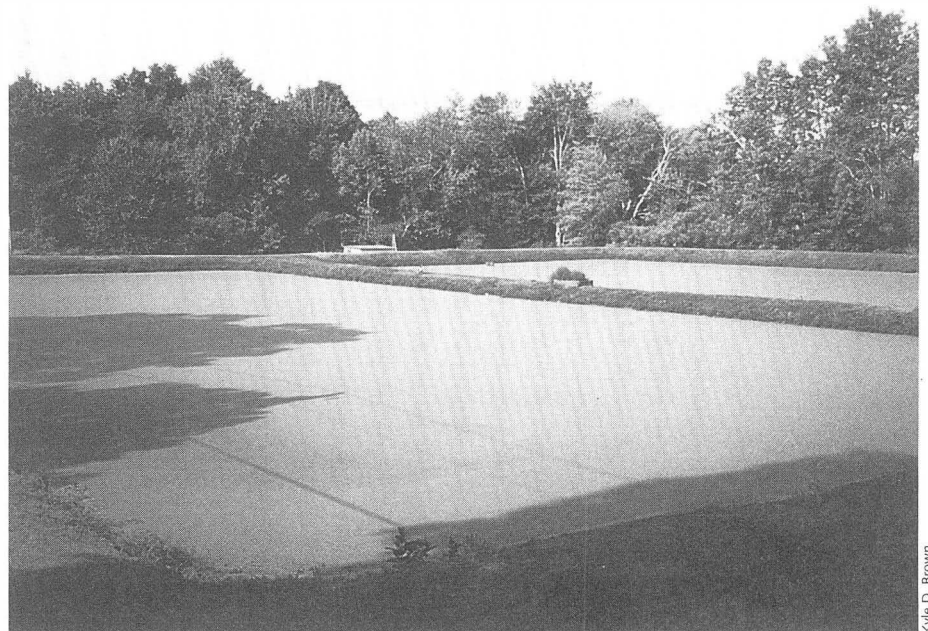
Daniel Bubly, P.E., L.A., A.I.C.P.  
Bubly Associates, Inc.  
Sharon, Massachusetts

### Graphics:

Gary M. Fishbeck

### Reviewer:

Robert F. Ferrari, P.E.  
Ferrari-Atwood Engineering, Inc.  
Providence, Rhode Island



Kyle D. Brown

## CONTENTS

### 1.0 Introduction

- 1.1 Types of Sewage Systems
- 1.2 On-Site Disposal

### 2.0 Description of Sewage System Processes

#### 3.0 System Alternatives

- 3.1 System Components
  - Small Individual Systems
  - Large Cluster Systems
- 3.2 System Configuration
  - Costs
  - Density of Development
  - Site Suitability
- 3.3 Additional Factors
  - Filtration through Soil
  - Removal of Nitrates
  - Soil Modification
- 3.4 Solids Removal/Digestion Systems
  - Septic Systems

#### Aerobic Systems

- 3.5 Other Sewage Disposal Alternatives
  - Composting Toilets
  - Recirculating Systems
  - Holding Tanks
- 3.6 Cesspools

#### 4.0 Design of Septic Tanks and Leaching Systems

- 4.1 Applications
- 4.2 Theory
  - Primary Functions
  - Maintenance
- 4.3 Sizing and Details: Septic Tanks
  - Sizing
  - Design Details
- 4.4 Sizing and Details: Leaching Facilities
  - Sizing
  - Design Details

#### 4.5 Grease Traps

- 4.6 Dosing Chambers
- 4.7 Relationship of On-Site Systems to Trees and Paving
  - Trees
  - Paving

#### 5.0 Aerobic Systems with Surface Infiltration

- 5.1 Application
- 5.2 Lagoons
- 5.3 Package Plants
- 5.4 Subsurface Leaching

#### 6.0 Aerobic Systems with Evapotranspiration Systems

- 7.0 Aerobic Systems with Surface Water Discharge

#### References

# Recreational Water Bodies

## CREDITS

### Contributor:

Daniel Bubly, P.E., L.A., A.I.C.P.  
Bubly Associates, Inc.  
Sharon, Massachusetts

### Graphics:

Gary M. Fishbeck

### Reviewers:

Mark B. Darnold, P.E.,  
The Berkshire Design Group, Inc.  
Northampton, Massachusetts

Robert F. Ferrari, P.E.  
Ferrari-Atwood Engineering, Inc.  
Providence, Rhode Island



Kyle D. Brown

## CONTENTS

- 1.0 Introduction
- 2.0 Evaluative Criteria for Recreational Water Bodies
  - 2.1 Water Quality
  - 2.2 Water Levels
  - 2.3 Side Slopes
- 3.0 Swimming Waters
  - 3.1 General
  - 3.2 Swimming Pools
  - 3.3 Ponds and Lakes
  - 3.4 Stream Impoundments
    - Site Selection
    - Water Supply
    - Water Quality
- Reservoir Form
- Watershed Considerations
- Construction of Small Dams
- 3.5 Excavated Ponds
  - General
  - Water Supply and Quality
- References

# Irrigation

## CREDITS

### Contributors:

Jim Wright,  
Category Manager, Rotors  
The Toro Company  
Riverside, California

Erich O. Wittig  
The Toro Company  
Riverside, California

### Advisors/Reviewers:

Ken Killian  
Killian Design Group, Inc.  
Howard, Illinois

Jeffrey D. Brauer  
Golfscapes, Inc.  
Dallas, Texas

Richard Lakutis  
The Architects Collaborative, Inc.  
Cambridge, Massachusetts

Stephen W. Smith  
EDAW, Inc.  
Fort Collins, Colorado

John Hooper  
Hooper Engineering, Ltd.  
Palatine, Illinois

Michael Holland  
Sasaki Associates, Inc.  
Watertown, Massachusetts



Toro Corp.

## CONTENTS

### 1.0 Introduction

- 1.1 General
- 1.2 Important Considerations
  - Plant Growth Requirements
  - Conservation of Water

### 2.0 Water Sources

- 2.1 Municipal Water
- 2.2 Lakes, Ponds, Reservoirs, Streams, and Rivers
- 2.3 Wells

### 2.4 Effluent Water

- Acquisition
- Analysis
- Permits and Regulations
- Public Attention
- Assessing Water Requirements

### 3.0 Design Criteria

- 3.1 Climatic Conditions
  - Rainfall
  - Wind

### 3.2 Soil Characteristics

- 3.3 Plant Materials
- 3.4 Available Watering Time
- 3.5 Property Size and Shape
- 3.6 Location of Buildings, Trees, and Other Fixed Objects

### 3.7 Elevation Changes

### 3.8 Economic Considerations

### 4.0 Types of Irrigation

- 4.1 Sprinkler Irrigation Systems

# The site design and construction reference of the design professions

Newly designed and containing 40 percent completely new content, *Time-Saver Standards for Landscape Architecture, Second Edition*, continues to be the most complete source of site construction standards and data for the design and planning professions and related academic disciplines. It maintains and enhances its emphasis on promoting environmentally suitable techniques, processes, and materials aimed at mitigating the impact of construction intervention.

This essential and comprehensive Second Edition not only covers the major changes that have occurred in the last decade, it also serves as a framework for future trends. It is fully metric, to meet Federal and International requirements, with expanded coverage of handicapped access and human dimensional standards. *Time-Saver Standards for Landscape Architecture, Second Edition*, features increased coverage of:

- ▶ **SITE STORM WATER "BEST MANAGEMENT" PRACTICES**
- ▶ **NEW URBAN TREE PLANTING AND XERISCAPE CONCEPTS**
- ▶ **EARTH RETAINING STRUCTURES AND PAVEMENT DESIGN**
- ▶ **LAND RECLAMATION, INCLUDING SOIL AND VEGETATION RESTORATION**
- ▶ **METRIC SITE LAYOUT PRACTICES, INCLUDING RECREATION FACILITIES**
- ▶ **ENERGY AND RESOURCE CONSERVATION**
- ▶ **NATURAL PROCESSES AND SITE CONSTRUCTION PROCEDURES**
- ▶ **NEW EXPANDED CONSTRUCTION DETAILS**
- ▶ **SIMPLIFIED CONSTRUCTION MATERIALS DATA**

In the time honored tradition of Time-Saver Standards, this Second Edition combines the expertise of over 200 design professionals to create a working resource for all who plan, design, manage, and build human landscapes. Over 50 sections provide concise tables, checklists, "Key Point" text summaries, and illustrations to provide an invaluable information resource for offices and classrooms throughout the world.

Cover Design: Margaret Webster-Shapiro. Cover Photo: SuperStock, Inc.

ISBN 0-07-017027-4



9 0000



9 780070 170278

Visit us on the World Wide Web at  
[www.books.mcgraw-hill.com](http://www.books.mcgraw-hill.com)

**McGraw-Hill**

A Division of The McGraw-Hill Companies

